



## Rapid Flyer Dove (v13.1) #69109-0

Thank you for purchasing a Lucky Duck™ Premium Decoy. To view additional Lucky Duck™ products please visit your local sporting goods dealer or logon to our website at [www.luckyduck.com](http://www.luckyduck.com).

**NOTE: This decoy has an intermittent timer that makes the wings start & stop.**

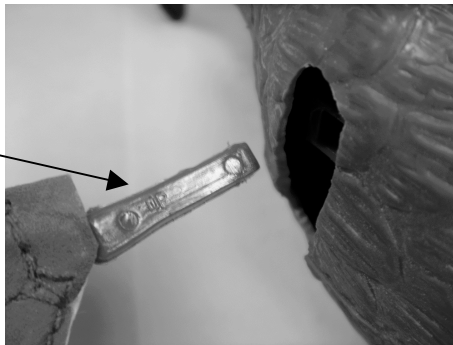
**Included in this package:**

- (1) Rapid Flyer Dove decoy
- (2) Wings
- (1) Metal Ground stake (3pc)
- (1) Nylon Carry Bag

**Assembly Instructions:**

- 1) Flip dove upside down and remove the battery cover. Install (3) AAA batteries (not included). Negative battery terminal always faces the spring. Reinstall the snap-on battery cover. **Warning:** DO NOT MIX OLD AND NEW BATTERIES. DO NOT MIX ALKALINE, STANDARD (CARBON-ZINC), OR RECHARGEABLE (NI-CAD, NI-MH, ETC) BATTERIES.
- 2) To install the wings. Position so the gray side is up and press the end of the wing shaft into it's mating part on the bird body. Repeat this option for the second wing. **White wing patch faces down.** There is a small UP molded onto the wing base where it attaches to the dove body which indicates which side is up. See Illustration below.

Notice the word "UP".  
This indicates this side  
of the wing is up for  
installation



- 3) We have included an adjustable ground stake for the Rapid Flyer Dove. Simply press the stake into the ground and attach the alligator clip on the decoy to the mounting bracket on the stake.

Lucky Duck™ warrants this product against all manufacturing defects for a period of 1 year from date of purchase. Proof of purchase is required. Abuse of the product (submerged in water, dropped, mistreatment etc.) is not covered. Please return and exchange the defective unit to the store where you purchased the product. If the store will not accept the return, please call customer service at 715-338-3183 .



**Lucky Duck™**  
A Division of Expedite International Inc.  
1201 Beaudry Blvd.  
Hudson, WI 54016  
[www.luckyduck.com](http://www.luckyduck.com)